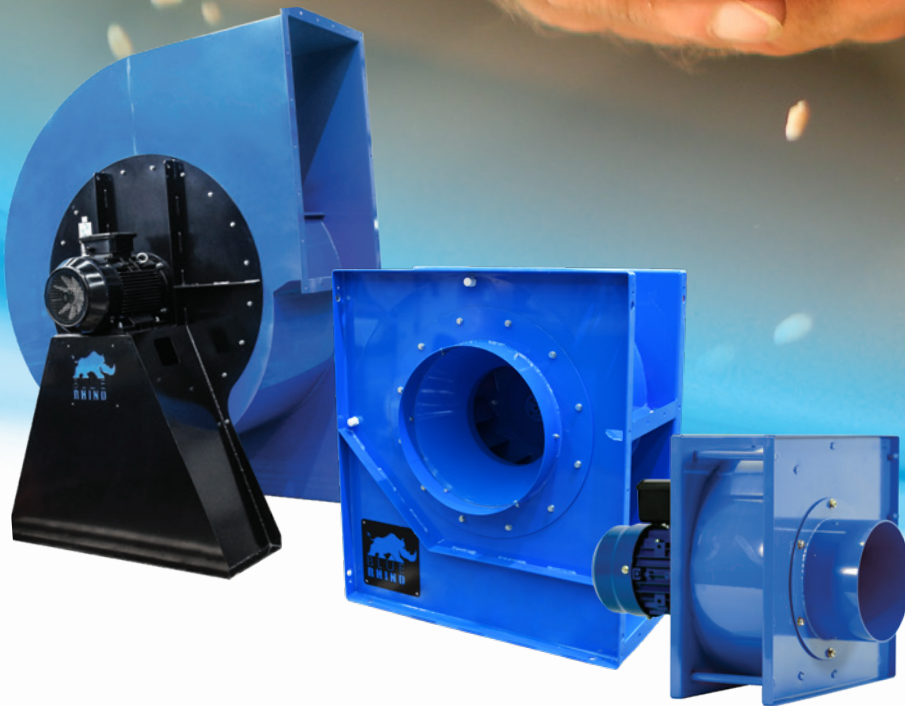


# Help Protect and Aerate Grain Storage



Fantech have a vast range of **Grain Aeration Fans** designed to cool and dry grain in storage, to keep it at the correct temperature and moisture level, until such time as the buyer wants to take possession.



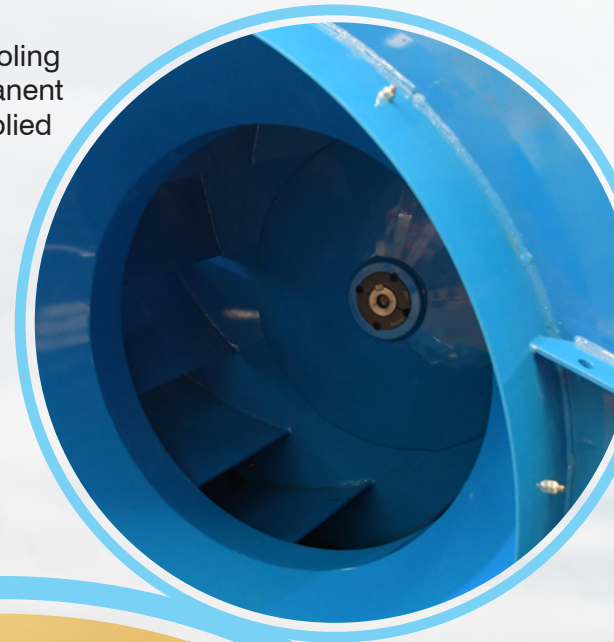


# Grain Aeration - Cooling and Drying Fans

Air movement is critical for optimum operation of any grain storage and aeration system. Our Fantech fans are selected to suit the volume and pressure requirements of the crop and system whilst careful consideration is given to other important factors such as noise, power availability and efficiency.

Fantech offer a range of centrifugal fans for small to large grain cooling and drying applications to accommodate both portable and permanent installations. Adjustable pitch, axial fan variations can also be supplied where necessary.

Fans are available to deliver 2 - 3 L/s per tonne for aeration cooling or 15-25 L/s per tonne for aeration drying as per GRDC recommendations for any storage size.\*



*\* It is important to consider the type of grain being stored, along with the storage height and duct configuration to ensure that the fan can generate the appropriate amount of static pressure.*

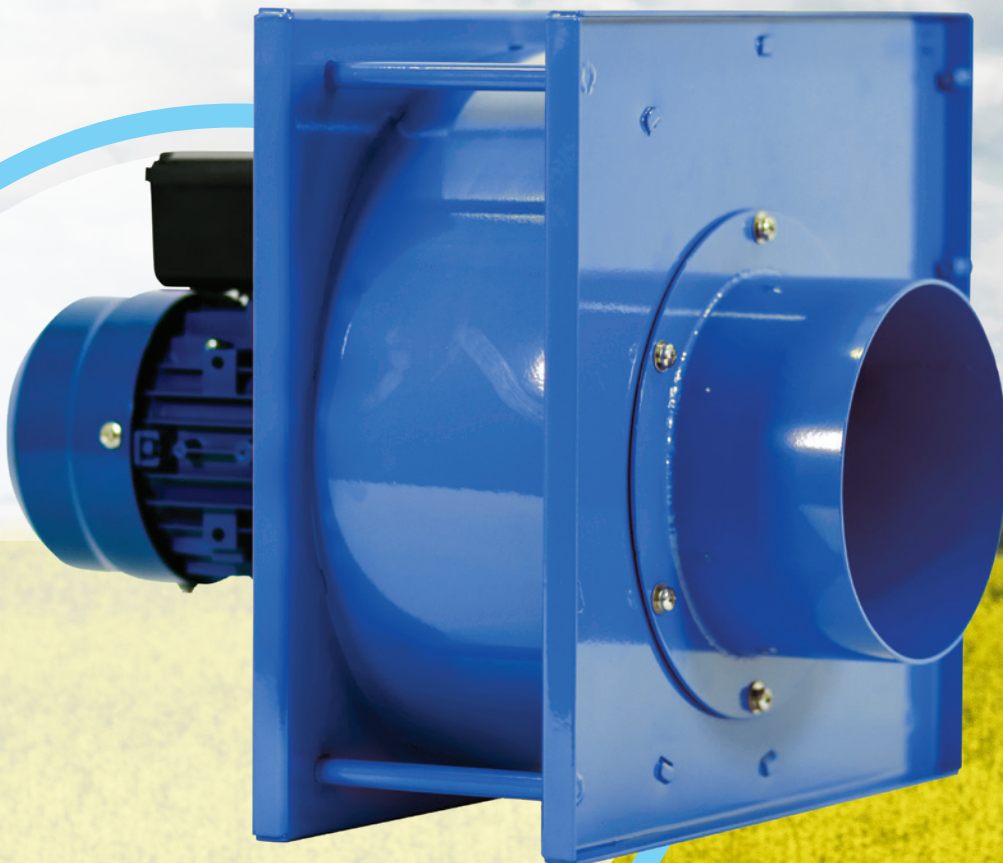




# Hydor Centrifugal Grain Aeration Fan

The Hydor grain aeration fan uses a high-speed centrifugal fan for natural air-drying higher grain depths. It uses 2mm steel plate that is primed and painted for external use with built in corner stiffening supports that double as carrying handles.

- High-speed centrifugal fan for cooling or drying higher grain depths
- Can be adapted to any aeration system
- Motors come in high efficiency single phase and 3-phase variations, both AC and EC
- Available in 100, 150 and 200mm diameter spigot sizes
- A range of models to suit air flows from 425 to 2718 m<sup>3</sup>/h
- Suits pressure requirements from 489 to 1245 PA
- Models available from 10 to 32.6kg in weight
- Can be mounted in any position

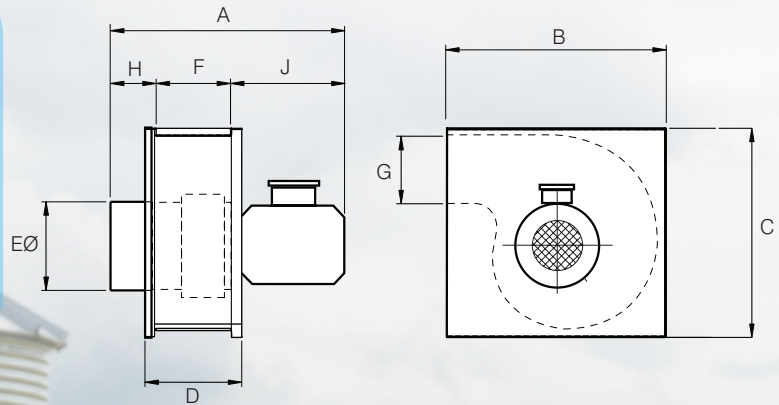




## Hydor Centrifugal Grain Aeration Fan Technical Data

Model Number	Air flow m³/h	Pressure PA	Sound dB(A) @ 3m	1ph kW	Amps	3ph kW	Amps
GD1-1AC	425	498	66	0.18	1.25		
GD2-1AC	680	498	68	0.25	1.65		
GD2-3AC	680	498	65			0.25	0.65
GD3-1AC	1529	1245	65	1.10	6.40		
GD3-3AC	1529	1245	68			1.10	2.43
GD4-1AC	2039	1245	66	1.50	8.50		
GD4-3AC	2039	1245	66			1.50	3.22
GD5-3AC	2718	1245	72			2.20	4.58

### Dimensions



Model Number	A	B	C	D	EØ	F	G	H	J	kg
GD1..	380	279	290	139	98	126	94	77	194	10
GD2..	380	328	311	139	148	109	97	77	194	12
GD3..	504	445	424	196	198	146	136	101	257	23
GD4..	494	445	424	186	198	163	136	102	257	27
GD5..	525	493	468	216	198	166	151	102	257	33

Dimensions in mm



# Blue Rhino Centrifugal Fan Series

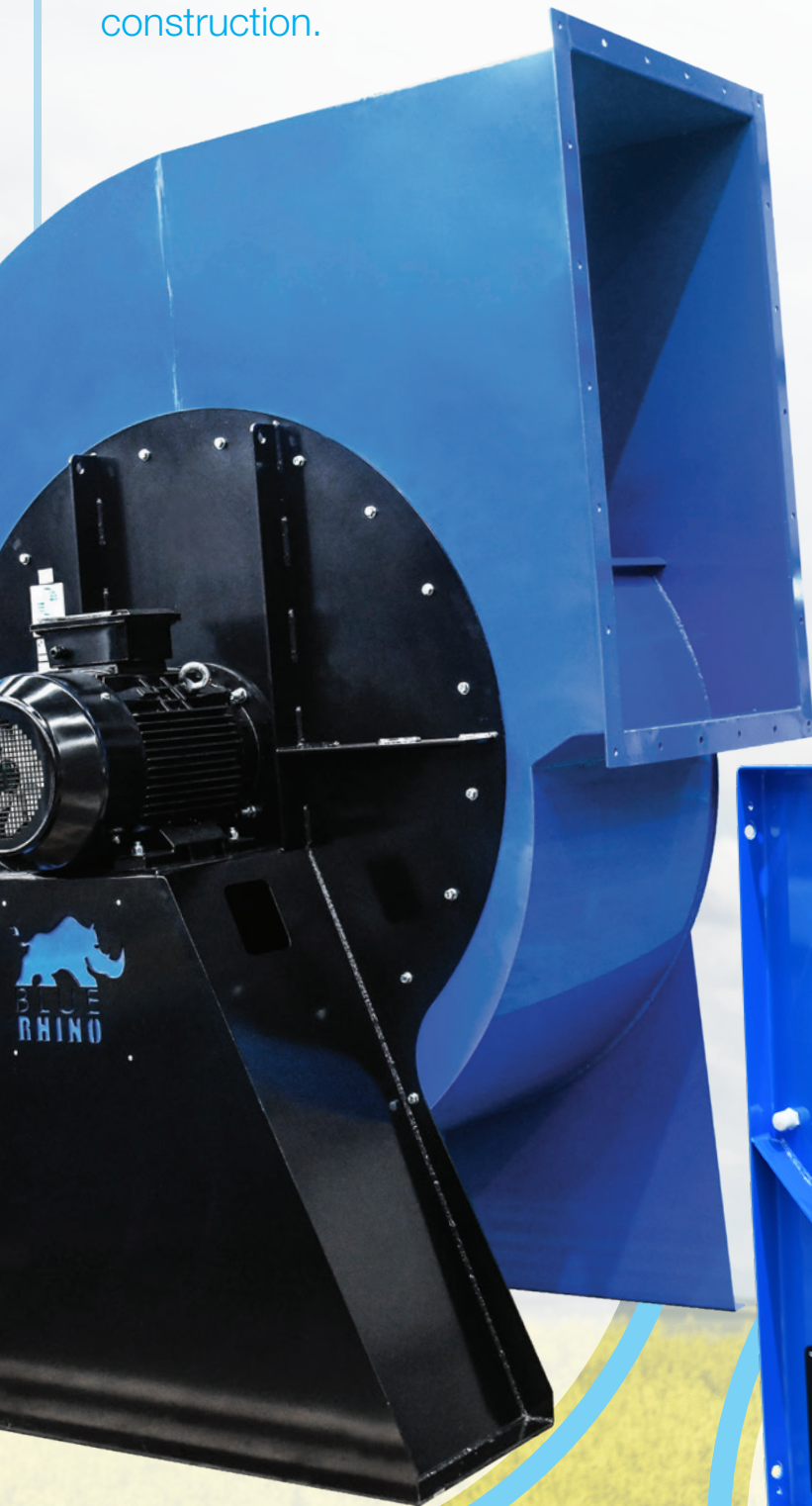
The Blue Rhino range of single width, single inlet (SWSI) centrifugal fan features a backward-curved laminar impeller and a heavy duty, fully welded construction.

Their innovative design uses a Variable Speed Drive (VSD) to achieve the desired speed, eliminating the need for a high maintenance belt and pulley system. They are driven by a direct drive motor and are available with a long-lasting hot dip galvanised finish or durable blue powder coating. The range is available in 15 impeller sizes, extending from 12" (305mm) to 44" (1120mm) diameter.

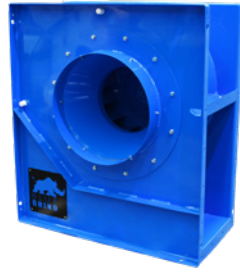
Smaller sizes come in a box type design and larger sizes with a pedestal mounted motor.

- Can be adapted to any aeration system
- Pedestal Blue Rhino cowl can be supplied with a 0°, 90° or 180° discharge angle, box design can be rotated to suit the application
- Fitted with a 3-phase motor
- Controlled with VSD which eliminates the need for high maintenance belt and pulley system (supplied separately)
- VSD can be factory pre-configured to suit application, creating a time saving plug and play system
- Fitted with inlet spigot and discharge flange
- Driven by a reliable direct drive motor

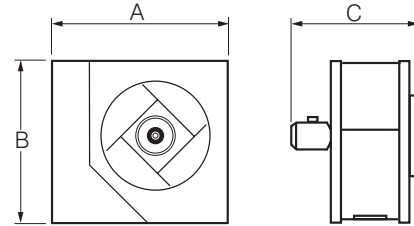
 See back page for technical data and dimensions



## BRB - Box Type Blue Rhino



### Dimensions



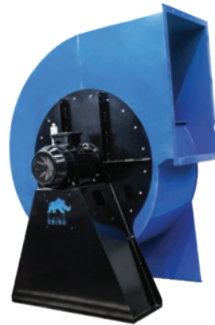
### Technical Data

Model Number BRB..	Max Speed rev/sec	Max. Amps	Motor. kW	Max. PA
12-305LS-48	48	2.4	1.1	1150
13-330LS-48	48	4.6	2.2	1350
14-355LS-48	48	5.8	3	1550
15-380LS-48	48	7.6	4	1800
16-410LS-48	48	10.5	5.5	2100
18-460LS-33	33	5.7	3.0	1250
20-510LS-29	29	8.2	4	1200
22-560LS-29	29	10.6	5.5	1500
24-610LS-24	24	11	5.5	1250
27-680LS-22	22	14.3	7.5	1275
30-760LS-19	19	15.4	7.5	1200

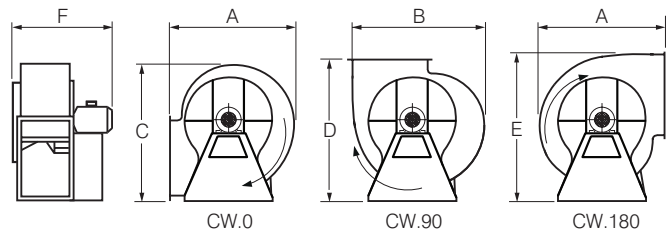
Model Number BRB..	A	B	C	App. Weight kg
12-305LS-48	682	603	579	87
13-330LS-48	733	651	672	102
14-355LS-48	784	699	705	122
15-380LS-48	835	747	800	146
16-410LS-48	900	809	851	210
18-460LS-33	1020	908	808	198
20-510LS-29	1122	1004	920	262
22-560LS-29	1224	1100	984	297
24-610LS-24	1335	1196	1060	362
27-680LS-22	1473	1330	1143	423
30-760LS-19	1640	1483	1239	564

Dimensions in mm

## BRP - Pedestal Type Blue Rhino



### Dimensions



Scan the QR Code for more information



### Technical Data

Model Number BRP ..	Max Speed rev/sec	Max. Amps	Motor. kW	Max. PA
27-680LS-29	29	27.6	15.0	2250
30-760LS-29	29	53	30.0	2800
33-840LS-24	24	56.9	30	2470
36-920LS-24	24	66.6	37	2970
40-1020LS-16	16	37.1	18.5	1600
44-1120LS-16	16	55	30	1970

Model Number BRP ..	A	B	C	D	E	F	App. Weight kg
27-680LS-29	1314	1435	1436	1467	1699	1248	479
30-760LS-29	1467	1598	1605	1639	1893	1412	684
33-840LS-24	1621	1776	1774	1811	2102	1471	795
36-920LS-24	1773	1938	1943	1983	2295	1545	949
40-1020LS-16	1965	2141	2139	2183	2522	1605	1027
44-1120LS-16	2156	2344	2345	2393	2759	1719	1249

Dimensions in mm

Note: Largest capacity models listed for each Blue Rhino BRB and BRP size (other capacities available).  
A VSD is used to meet the necessary volume and pressure requirements of the crop and system.



#### Fantech Pty. Ltd.

Victoria: (+61 3) 9554 7845  
New South Wales: (02) 8811 0400  
South Australia: (08) 8294 0530  
Northern Territory: (08) 8947 0447  
Queensland: (07) 3299 9888  
Western Australia: (08) 9209 4999  
A.C.T.: (02) 6280 5511  
Tasmania: (03) 6273 6455  
New Zealand: (09) 444 6266

[www.fantech.com.au](http://www.fantech.com.au) | [Twitter](#) | [LinkedIn](#) | [Facebook](#) | [YouTube](#)

For sales enquiries contact:

Specifications and design subject to change without notice.